

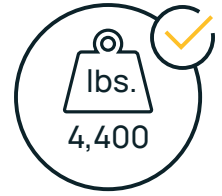
MasterMover®

SM200+ SS

Battery powered electric tugger



SM200+ SS



Overview

The Stainless Steel range of electric tuggers delivers the same level of performance as our mild steel ranges but with the added benefit of seamlessly integrating into sterile environments.

Whether it's a biopharmaceutical cleanroom suite or a food manufacturing facility, our stainless steel electric tuggers remove manual handling and drive operational efficiency without compromising the cleanliness of your facility.

Constructed from high-grade 316 stainless steel and with IP ratings of up to IP55 available, stainless steel electric tuggers are ideally suited to the stringent requirements of sterile environments. You're guaranteed powerful performance with machines in the range capable of moving up to 33,000 lbs.

The Stainless Steel range of electric tuggers facilitates the controlled movement of loads in tight spaces, with an array of coupling options available that put load security and safety at the forefront.

Key Features

Safety

- Warning horn, flashing safety light, emergency stop button and anti-crush button
- Speed control with an optional two-speed selector switch for maximum control
- Complete load security with automatic braking ensuring load stop

Performance

- Powerful weight-moving capabilities suited to every application
- Maximum traction even on wet floors
- Compact and maneuverable to deliver precise movements in even the tightest of spaces

Power

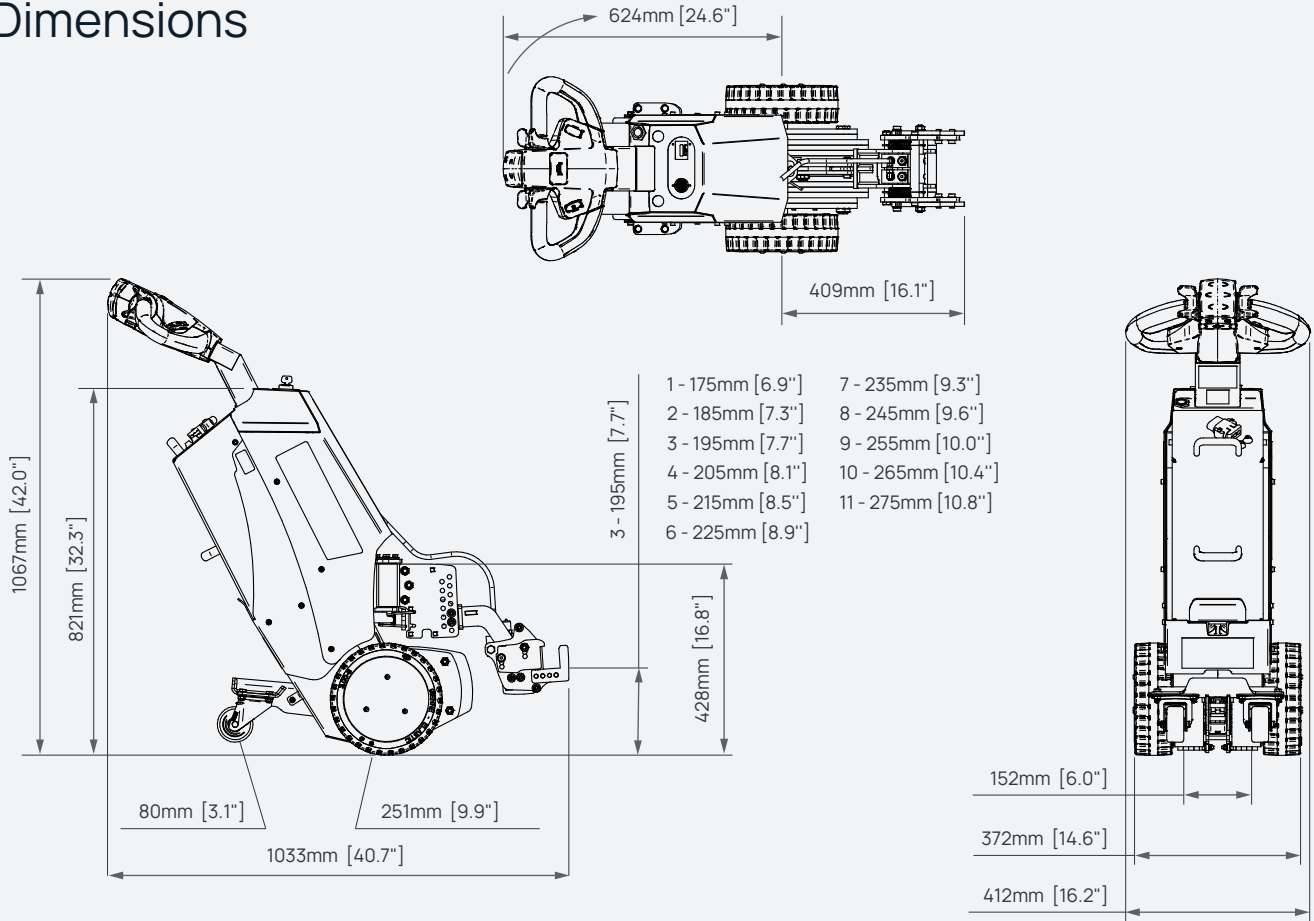
- Optimizes motor output to optimize speed and power
- Maintenance-free, interchangeable battery options
- Powerful, effective, traction generation for smooth performance

Connection

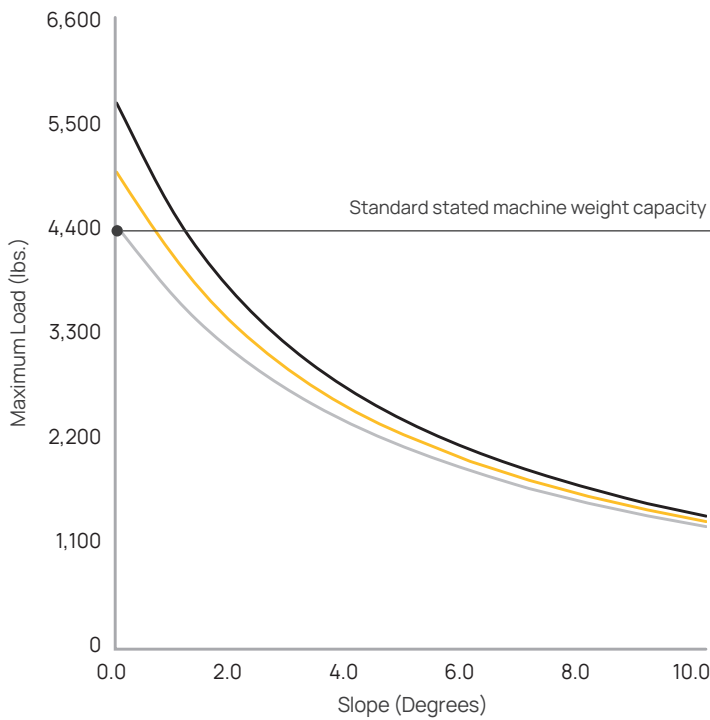
- Secure coupling systems to deliver the controlled movement of loads
- A range of coupling options available to connect to a variety of loads
- Custom couplings available



Dimensions



Slope Performance



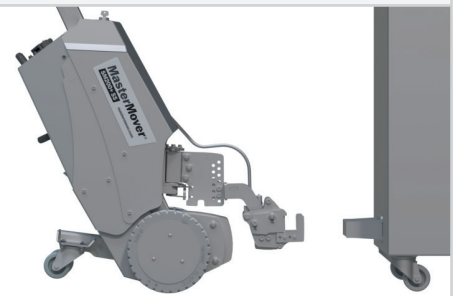
Load Rolling Resistance*
 — 6% — 7% — 8%

* Other variables that affect load moving capability could include quality of floor/terrain and the type/condition/quality of load wheels.

Couplings

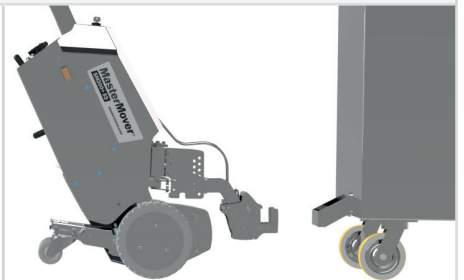
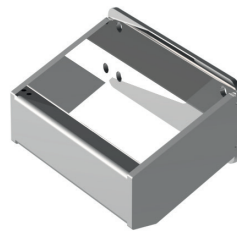
A-Frame Coupling

Z56-00600 male | Z56-00700 female - straight



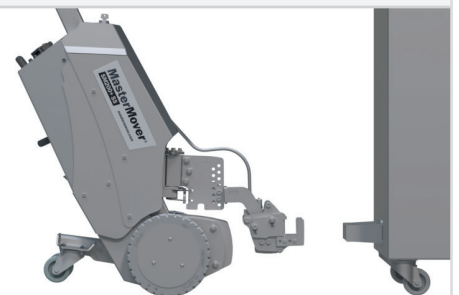
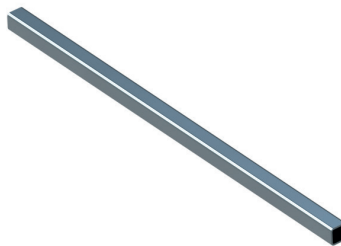
A-Frame Coupling

Z56-00600 male | Z56-00701 female - angled



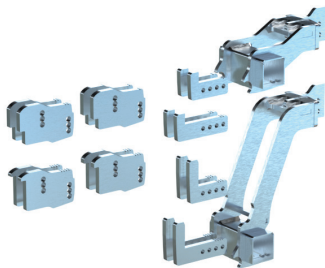
Box Section

Sizes 20x20 to 75x75mm



Variable Kit



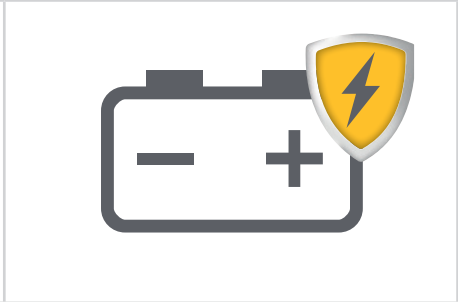
Z56-00601 male





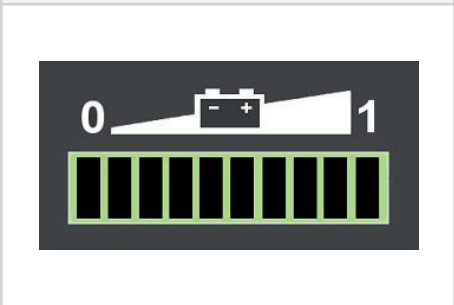


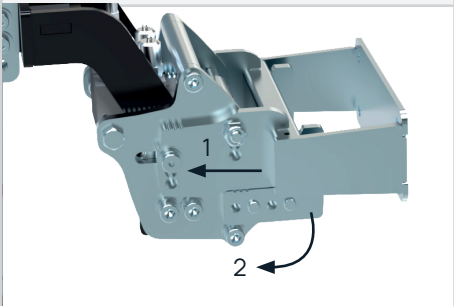
Custom Couplings

Where required, custom coupling solutions can be designed by our in-house Design and Engineering team.

Machine Options

Two Speed Selector Switch Z56-00500	Flashing Light & Motion Beeper Z56-00501	Battery Protection System
		

Machine Safety Features

Key Switch	Automatic Parking Brake	Battery Discharge Indicator
 A close-up photograph of a key switch on a machine. The switch is circular with a blue ring and a black handle. The handle is currently in the '0' position, and the number '1' is visible on the ring. The text 'E.O.S.' is printed on the black part of the switch.	 A black and white symbol for an automatic parking brake, consisting of a large letter 'P' inside a circle, with two curved lines on either side of the circle.	 A battery discharge indicator graphic. It features a battery symbol with '-' and '+' signs, a scale from 0 to 1, and a row of ten green bars below it representing the charge level.
Anti-Crush Button	Warning Horn	Two Stage Lock and Load
 A photograph of a red and yellow anti-crush button on a machine's control panel.	 A photograph of a yellow warning horn button on a machine's control panel.	 A photograph of a two-stage lock and load mechanism. It is a metal component with two arrows labeled '1' and '2' indicating the stages of operation.

SM200+ SS Technical Specification

Machine	
Z Code	Z56-00100
Maximum load (on castors)	4,400 lbs.
Maximum push force	1,570 N
Maximum pull force	1,570 N
Combined machine & battery weight	295 lbs.
Drive type	Twin Electric Motor
Braking	Regenerative
Parking brake	Electromagnetic
Drive wheel type	Non-Marking Rubber
Castor wheel type	Non-Marking Polyurethane
Drive motor power	2 x 0.24 kW
Controller type	DC
Standard machine speed	1.2 mph
Hare mode speed (With two speed selector switch)	1.9 mph
Tortoise mode speed (With two speed selector switch)	0.7 mph
Maximum possible machine speed	3.7 mph
Maximum slope	10°
Voltage	24 v
Noise level	Motor ≤80 dBA Flashing light ≤85 dBA Horn ≤112 dBA
Metal work finish	Stainless Steel 316 grade 240-grit abrasive to 0.6μ satin finish
IP rating	IP44
Wheel diameter	9.8"
Hydraulic Specification	
Clamp Force at the Coupling	1,708 lbs.
AGM Battery	
Z codes	Z56-00300 Z56-00301
Battery pack capacity	28 Ah 35 Ah
Maximum distance per charge*	2.6 miles 3.3 miles
Charge time	5 hrs 30 mins 7 hrs
External Charger	
Input voltage	85 - 265 v
Hertz	50 - 60 Hz
Amps	5 A
Phase (single, three)	Single
IP Rating	IP30

SM200+ SS Technical Specification

Lithium Battery	
Z Code	Z56-00401
Battery pack capacity	39 Ah
Maximum distance per charge*	3.7 miles
Charge time (External charger)	1 hrs 45 mins
External Charging	
Input voltage	85 - 265 v
Hertz	50 - 60 Hz
Amps	25 A
Phase (single, three)	Single
IP rating	IP30
Coupling	
A-Frame Coupling - Straight (male female)	Optional
A-Frame Coupling - Angled (male female)	Optional
Box Section	Optional
Variable Kit	Optional
Safety	
Key Switch	Standard
Automatic Parking Brake	Standard
Battery Discharge Indicator	Standard
Anti-Crush Button	Standard
Warning Horn	Standard
Two Stage Lock to Load	Standard
Options	
Flashing Safety Light and Motion Bleeper	Optional
Two Speed Selector Switch	Optional
Battery Protection System	Standard

MasterMover®

mastermover.com

© Copyright 2023

CE ISO 9001 ISO 45001