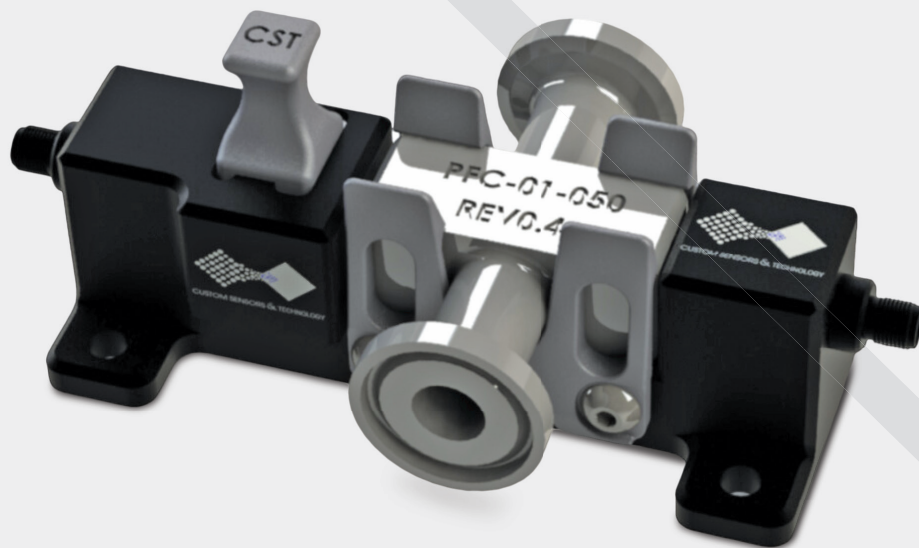


Process Flow Cell and Holder

Simple
Accurate
Versatile



Simple Integration of Disposable Flow Cells

The Process Flow Cell and Holder combines EZ-Cal technology and a snap in flow cell to provide a single use process flow cell solution.

Using standard SMA-905 connections, the flow cell is compatible with the PX2 family of Photometric Transmitters and a variety of spectrometers. Use both liquid standard and ND standard cuvettes for verification purposes thanks to the EZ-Cal technology.

General Specifications

Holder Material Anodized Aluminum and SLS Nylon 12
Holder Optics Fused Silica
Verification ND Standard Cuvettes or Liquid Standard Cuvettes, 10mm-5mm-2mm-1mm Sizes
Fiber Connections SMA-905
Wetted Materials PP USP Class IV, PC and 316 SS are available
Window Materials Fused Silica or Sapphire
Seal Material Silicone USP Class VI
Machining Criteria Coolant and Air Blast Free Alcohol Cleaned Fixtures
Molding Criteria Class 8 Molding
Assembly Criteria Clean Hood Assembly, Class 7
Pre-Assembly Cleaning Alconox Parts Washer, Alcohol Soak and Brush
Sterilization Gamma and Xray Compatible
Packaging PE Heat Sealed Bag

Service Conditions

Temperature, PP Cell	-20°C - 65°C
Pressure Rating, PP Cell	-10 to 100 PSI
Fluid Flow	0-7 GPM dependent on connection size
Fluid Phase	Liquid, Slurry, Gas
Fluid Density	1g/cm ³ typical
Fluid Viscosity	1-400 centipoise

Overall Accuracy Measurement Range

UV-VIS-NIR Absorbance When Paired with a CST PX2	± 1% 0-2AU, ± 2% 2-3AU,	0-3 AU, Higher values may be possible
--	----------------------------	---------------------------------------



hp-ne.com
info@hp-ne.com
 +1 401.349.4477

Get In Touch