

Pulseless Dosing Disposable Pump compatible with Cole Parmer - Masterflex L/S drives.



www.naopump.com

Patented

The **NaoStedi** pulseless rotary volumetric piston pump is the first disposable pump able to deliver a real continuous steady flow with high volume and flow rate accuracy.



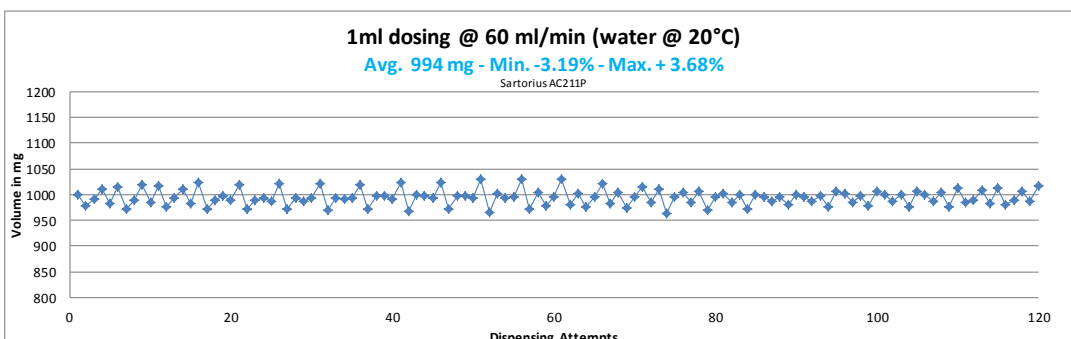
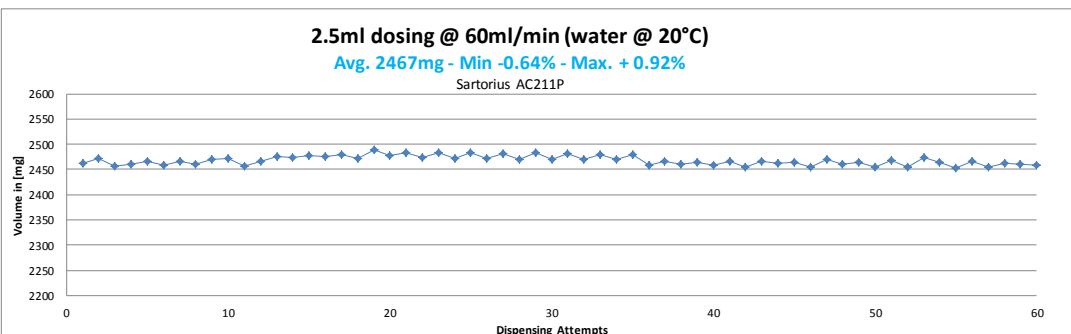
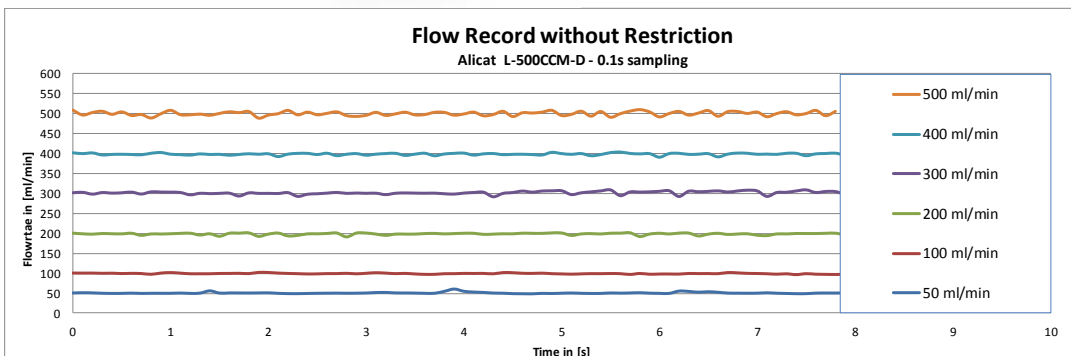
“Calibration less”

Characteristics

NaoStedi 2x 2.5ml

Pump chambers volume	2x 2.5ml
Flow rate range	0.5 to 500 ml/min (CW – max. 100 RPM)
Flow accuracy	+/- 3%
Minimum increment	0.1ml
Typ. Volume accuracy	+/- 1 % of full chamber (2.5ml)
Maximum outlet pressure	+ 2.5 bars (36 psi)
Maximum inlet vacuum	- 0.7 bars (-10 psi)
Typ. disposable lifetime	18h @250 ml/min – 1.5 bars (270 Liters)
Fluid viscosity	up to 70'000 cps
Inlet / Outlet Connector	Female Luer Lock *
Disposable material	Co-polyester *
Gaskets	LSR and FKM *

* others upon request



Masterflex Drive parameters

Tube Size	36
Calibration	333.333
Pump Direction	CW

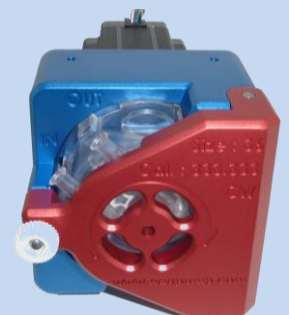


Masterflex Pump Holder

Inlet Outlet



Disposable pump head



Pump drive with Nema 24